



**Features :**

- Supports 90 - 264 VAC / 127 - 373 VDC
- Efficiency up to 86 %
- - 40°C to + 70°C Operating Temperature
- Compact size and 1U low profile
- Protection against short circuit, overload & overvoltage
- Cooling by free air convection

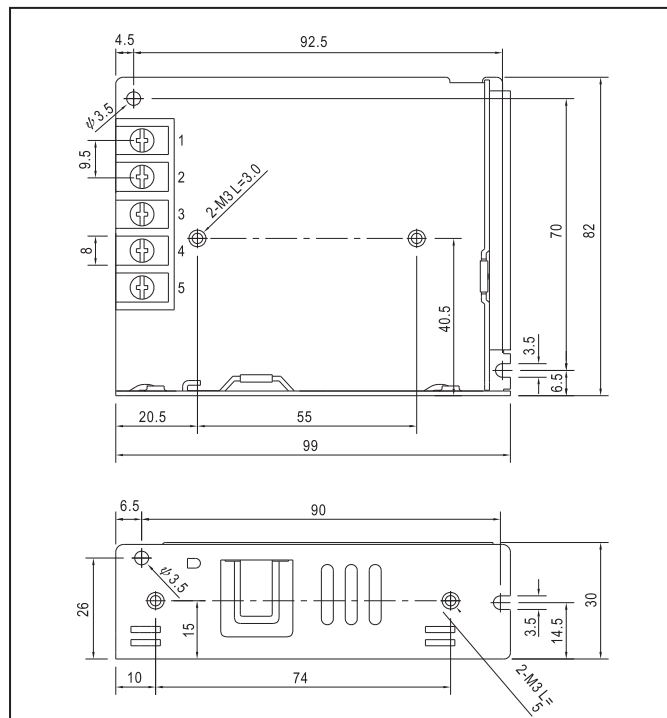
**SPECIFICATIONS:**

| MODEL        |                               | TPS50-24   |
|--------------|-------------------------------|--|
| OUTPUT       | NOMINAL DC VOLTAGE            | 24 V   |
|              | RATED CURRENT                 | 2.2 A  |
|              | RATED POWER                   | 52.8 W   |
|              | RIPPLE & NOISE (max)          | < 1 % of Vout  |
|              | VOLTAGE ADJ. RANGE            | 24 V to 28 V   |
|              | VOLTAGE TOLERANCE             | ± 1 %  |
|              | LINE REGULATION               | ± 1 %  |
|              | LOAD REGULATION               | ± 1 %  |
|              | TURN ON TIME                  | < 3 sec ; at full load   |
|              | HOLD UP TIME                  | ≥ 60 ms at 230 VAC & ≥ 10 ms at 115 VAC, Full load   |
|              | RISE TIME                     | < 100 ms   |
| INPUT        | VOLTAGE RANGE                 | 90 - 264 VAC / 127 - 373 VDC   |
|              | FREQUENCY RANGE               | 47 - 63 Hz   |
|              | EFFICIENCY @ 230 VAC          | Up to 86 %   |
|              | AC CURRENT                    | 0.9 A @ 115 VAC; 0.50 A @ 230 VAC  |
|              | INRUSH CURRENT                | < 45 Amps; Measured at 230 VAC, 25°C Ambient, Cold start   |
|              | LEAKAGE CURRENT               | < 1 mA; 240 VAC input  |
|              | NO LOAD POWER CONSUMPTION     | < 0.5 W; 115 VAC input   |
| PROTECTION   | OVERLOAD                      | > 110 % of rated output current; Hiccup mode; Autorecovery type.   |
|              | OVERVOLTAGE                   | 31.5 VDC ± 1 VDC<br>Hiccup mode; Autorecovery type.  |
|              | OUTPUT SHORT CIRCUIT          | Hiccup mode when output is shorted; Autorecovery type.   |
| ENVIRONMENT  | OPERATING TEMP                | - 40°C to + 70°C; De-rate linearly above 50°C from 100 % load at 50°C to 50 % load at 70°C, - 40°C to 0°C startup is guaranteed with spec deviation ( Output ripple can be more than 10 % of the output voltage. ) |
|              | STORAGE TEMP                  | - 40°C to + 85°C   |
|              | COOLING                       | Natural convection   |
|              | HUMIDITY                      | 5 to 95 % RH, Non condensing   |
|              | ALTITUDE                      | 2000 m   |
|              | VIBRATION                     | Component: 10 ~ 500 Hz, 2 G 10 min. / 1 cycle, period for 60 min. each along X, Y, Z axes  |
| SAFETY & EMC | DIELECTRIC WITH STAND VOLTAGE | I/P to Earth : 2500 VAC<br>I/P to O/P : 4000 VAC<br>O/P to Earth : 1500 VAC  |
| MECHANICAL   | DIMENSION                     | 99 x 82 x 30 mm ( L x W x H )  |
|              | WEIGHT                        | < 230 gms  |
|              | MOUNTING                      | Table Top  |

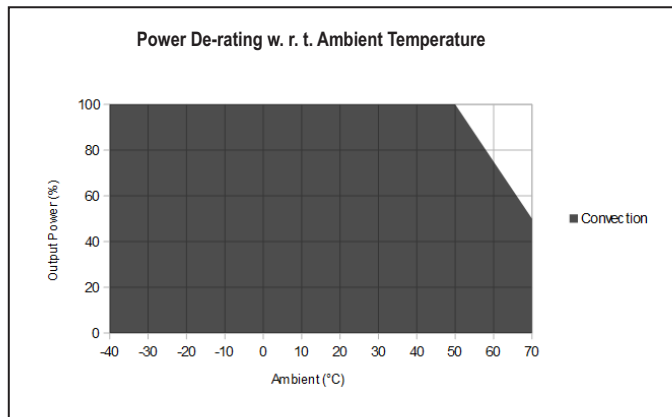
Connectors details

| Ref Des | Description             | Type                               | Pin number | Function    |
|---------|-------------------------|------------------------------------|------------|-------------|
| TRL1    | Input AC / DC connector | GOOSVN:GSA45S<br>-9.5-5P-1Y-00A(H) | 1          | AC / L      |
|         | Earth                   |                                    | 2          | AC / N      |
|         | Output DC connector     |                                    | 3          | Earth       |
|         |                         |                                    | 4          | V1 Negative |
|         |                         |                                    | 5          | V1 Positive |

Mechanical dimensions



De-rating curve



Ordering information

| Product Code | Description  | Certification |
|--------------|--|---------------|
| TPS50-24     | 52.8 W, 24 V / 2.2 A Table Top Power Supply in metal body. | NA            |