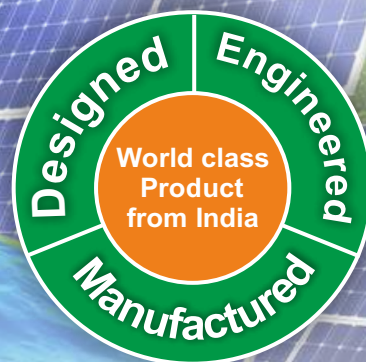


SOLAR ON GRID INVERTER

selec®



30kW, 33kW, 50kW



6kW, 10kW

Three Phase

**BIS
APPROVED**



4.2kW, 5.2kW, 6kW



1.5kW, 2.5kW, 3.3kW

Single Phase



R-71018473

www.selec.com

KEY FEATURES OF SELEC SOLAR ON GRID INVERTER



Anti-Islanding protection



Wider MPPT range



Low start-up voltage



>97% Efficiency



Ingress protection



Forced & Natural cooling convection



Remote monitoring

TECHNICAL SPECIFICATIONS

SYSTEM	SINGLE PHASE					
RATINGS	1.5kW	2.5kW	3.3kW	4.2kW	5.2kW	6kW
INPUT SPECIFICATIONS (DC)						
Max. Allowable PV Power (kW)	2.1	3.5	4.2	5.9	7.2	8.1
Nominal PV voltage (V)	360					
Max. DC Input Voltage (V)	550					
Start-up Voltage (V)	80					
Operating Range (V)	65-550			80-550		
MPPT Voltage range (V)	65-550			80-550		
Max input current per MPPT (A)	13			13.5		
Number of MPPT	1			2		
Max Input Strings Number	1			2		
Maximum PV short circuit current per MPPT (Isc)	16			16.9		
OUTPUT SPECIFICATIONS (AC)						
Rated output power (kW)	1.5	2.5	3.3	4.2	5.2	6
Max. AC power (kVA)	1.5	2.5	3.3	4.2	5.2	6
Nominal AC current, RMS (A)	6.3	10.4	13.8	17.5	21.7	25
Max. output Current (A)	7.1	11.9	16	19	23.6	27.2
Grid voltage range (V)	180 - 280					
Grid Frequency range (Hz)	50 (45-55Hz)					
Power Factor (at rated output power)	>0.99 (Adjustable from 0.8 leading to 0.8 lagging)					
Total harmonic distortion (THDi)	<3% at rated load					
Feed-in phase/connection phase	Single Phase					
EFFICIENCY						
Max. Efficiency (%)	97.4			98.4		
MPPT Efficiency (%)	>99.9					
Euro Efficiency (%)	97.1			97.5		
PROTECTIONS						
DC Reverse Polarity Protection	Yes					
Short Circuit Protection	Yes					
Over Current Protection	Yes					
Over voltage/ Under Voltage protection	Yes					
Over frequency/Under Frequency	Yes					
Insulation resistance monitoring	Yes					
Residual current detection	Yes					
Surge protection	Yes					
Islanding Protection	Yes					
Temperature Protection	Yes					
Integrated DC Switch	Optional					
Integrated AFCI (DC arc-fault circuit protection)	Optional					

TECHNICAL SPECIFICATIONS

SYSTEM	SINGLE PHASE	
INTERFACE		
DC Connection	MC4 Connectors	
Display	LCD with LED indication	
Datalogger & Communication (Optional)	RS485/Wi-Fi/GSM	
GENERAL DATA		
Topology	Transformerless	
Consumption @ night (W)	<0.5 W	<1 W
Operating Temperature Range	-25°C to +60°C	
Cooling Method	Natural convection	
Relative Humidity	0 to 100% non-condensing	
Max. Operational Altitude	4000 m	
Noise (dBA)	<25 dBA	
Designed Lifetime	> 20 years	
Warranty	7 years	
Ingress Protection	IP65	
Dimensions in mm (W*H*D)	275*313*131	375*394*156
Net weight (Kg)	5.2	10.8
Mechanical Integration	Wall mountable	
Standard Compliance	IEC 61683, IEC 60068, IEC 61727, IEC 61000-6-2, IEC 61000-6-3	
Certifications	IS 16221-1/2, IS 16169	

TECHNICAL SPECIFICATIONS

SYSTEM	THREE PHASE					
RATINGS	6kW*	10kW*	30kW*	33kW*	50kW*	100kW
INPUT SPECIFICATIONS (DC)						
Max. DC Input Power (kW)	6	10	30	33	50	100
Max. Allowable PV Power (kW)	7.5	12.5	41.2		62.5 ⁺	125 ⁺
Nominal PV voltage (V)	630		600			
Max. DC Input Voltage (V)	1000					1100
Start-up Voltage (V)	180		200			195
Operating Range (V)	160 - 1000		200 - 1000			180 - 1000
MPPT Voltage range (V)	160 - 1000		200 - 1000			180 - 1000
Max input current per MPPT (A)	11.6 / 11.6		30 / 30	26 / 26 / 26	40 / 30 / 30	26
Number of MPPT	2		2	3		10
Max Input Strings Number	2		3_3	2_2_2	4_3_3	20
Maximum PV short circuit current per MPPT (Isc)	16		55	40	55	40
OUTPUT SPECIFICATIONS (AC)						
Rated output power (kW)	6	10	30	33	50	100
Max. AC power (kVA)	6.6	11	36.3		55.5	110
Nominal AC current, RMS (A)	9	14	42	45	70	139
Max. output Current (A)	10	16	55		84	153
Grid voltage range (V)	320 - 480					
Grid Frequency range (Hz)	50/60 Hz (45-55Hz/55-65 Hz)					
Power Factor (at rated output power)	~ 1 (Adjustable from 0.8 leading to 0.8 lagging)					
Total harmonic distortion (THDi)	<3% at rated load					
Feed-in phase/connection phase	Three Phase					
EFFICIENCY						
Max. Efficiency (%)	98.3		98.8			98.7
MPPT Efficiency (%)	>99.9					
Euro Efficiency (%)	97.7		98.3			
PROTECTIONS						
DC Reverse Polarity Protection	Yes					
Short Circuit Protection	Yes					
Over Current Protection	Yes					

NOTE : * BIS Certified

+ Allowable PV power can go upto 50% of max.DC input power.

TECHNICAL SPECIFICATIONS

SYSTEM	THREE PHASE		
Over voltage/ Under Voltage protection	Yes		
Over frequency/Under Frequency	Yes		
Insulation resistance monitoring	Yes		
Residual current detection	Yes		
Surge protection	Yes		
Islanding Protection	Yes		
Temperature Protection	Yes		
Integrated DC Switch	Yes		
Integrated AFCI (DC arc-fault circuit protection)	Optional		
INTERFACE			
DC Connection	MC4		
Display	LCD with LED indications		
Datalogger & Communication (Optional)	RS485/Wi-Fi/GSM		
GENERAL DATA			
Topology	Transformerless		
Consumption @ night (W)	< 1W		
Operating Temperature Range	-25°C to 60°C		
Cooling Method	Forced Cooling		
Relative Humidity	0 to 100% non-condensing		
Max. Operational Altitude	3000 m	4000 m	
Noise (dBA)	< 30 dBA	<60 dBA	
Designed Lifetime	> 20 years		
Warranty	7 years		
Ingress Protection	IP65		
Dimensions in mm (W*H*D)	500*500*200	580*830*285	1060*586*363
Net weight (Kg)	26	86	100 approx.
Mechanical Integration	Wall mountable		
Standard Compliance	IEC 61683, IEC 60068, IEC 61727, IEC 61000-6-2, IEC 61000-6-3		
Certifications	IS 16221-1/2, IS 16169		

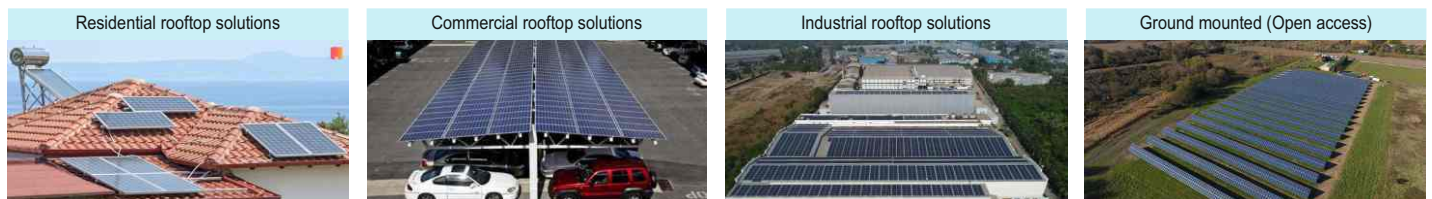
ORDERING INFORMATION

Product Code	Description	HSN Code	Product Code	Description
SINGLE PHASE			THREE PHASE	
GTI001WLM1PW	Grid Tie Inverter - 1 Phase/ 1.5 kW, Wall mounted with Wifi Module	85044090	GTI006WLM3PW	Grid Tie Inverter - 3 Phase/ 06 kW, Wall mounted with Wifi Module
GTI002WLM1PW	Grid Tie Inverter - 1 Phase/ 2.5 kW, Wall mounted with Wifi Module		GTI010WLM3PW	Grid Tie Inverter - 3 Phase/ 10 kW, Wall mounted with Wifi Module
GTI003WLM1PW	Grid Tie Inverter - 1 Phase/ 3.3 kW, Wall mounted with Wifi Module		GTI030WLM3PW	Grid Tie Inverter - 3 Phase/ 30 kW, Wall mounted with Wifi Module
GTI004WLM1PW	Grid Tie Inverter - 1 Phase/ 4.2 kW, Wall mounted with Wifi Module		GTI033WLM3PW	Grid Tie Inverter - 3 Phase/ 33 kW, Wall mounted with Wifi Module
GTI005WLM1PW	Grid Tie Inverter - 1 Phase/ 5.2 kW, Wall mounted with Wifi Module		GTI050WLM3PW	Grid Tie Inverter - 3 Phase/ 50 kW, Wall mounted with Wifi Module
GTI006WLM1PW	Grid Tie Inverter - 1 Phase/ 06 kW, Wall mounted with Wifi Module		GTI100WLM3PW	Grid Tie Inverter - 3 Phase/ 100 kW, Wall mounted with Wifi Module

All specifications are subject to change without notice.

PRICES ON DEMAND

APPLICATIONS



& many more...

Selec Controls Pvt. Ltd.

EL-27/1, Electronic Zone, TTC Industrial Area, MIDC, Mahape, Navi Mumbai 400710, INDIA.

Tel.: +91-22-4141 8468 / 452. Email: sales@selec.com | www.selec.com

Selec Subsidiaries: **Selec USA:** www.selec.com/us/en/ | **Selec GmbH:** www.selec-europe.com | **Selec Australia:** www.selec.com/au/en