

) HDWXUHV

- ▶ 6 LQJOH 6HW 3RLQW
- 2Q GHOD\ , QWHUYDO
- & 2 63'7
- 7PH 5DQJHV
- 'RZQ &RXQWLQJ

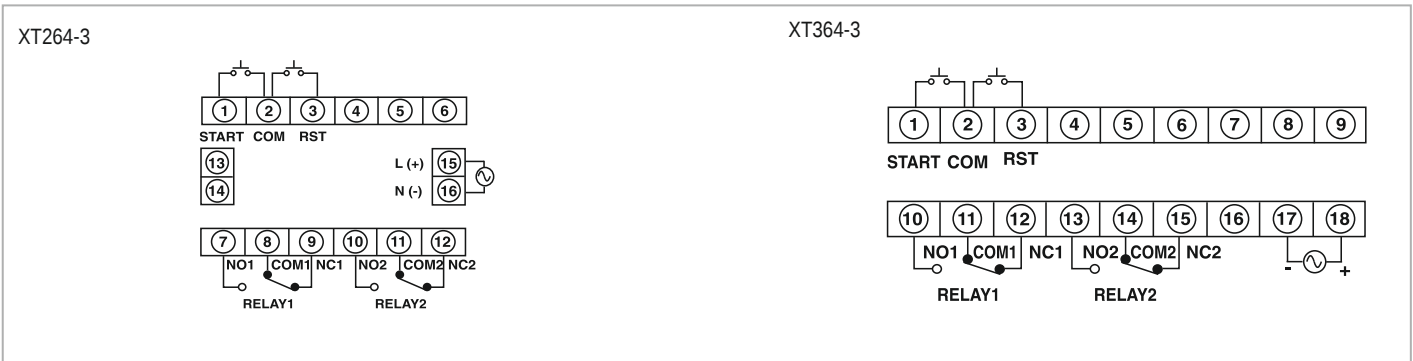
72 x 72mm

96 x 96mm

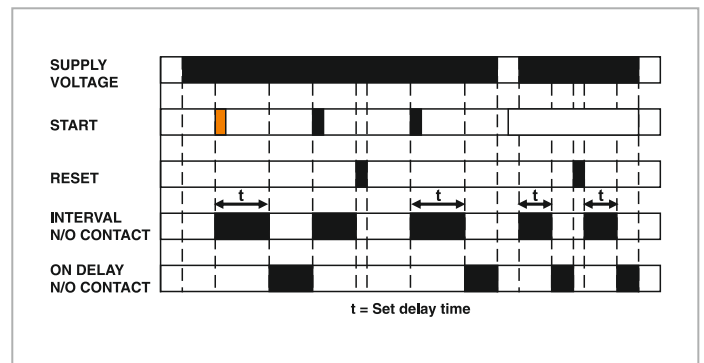
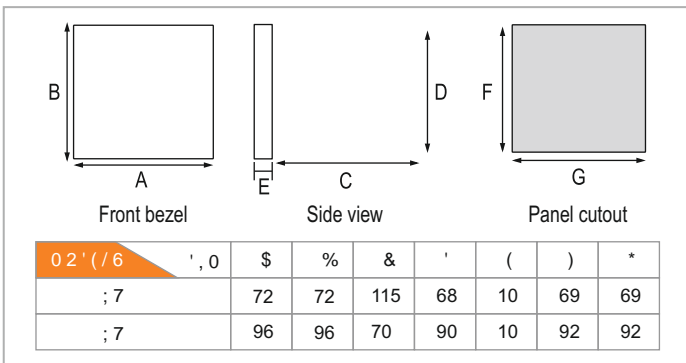
7HFKQLFDO VSHFLILFDWLRQV

		; 7	; 7
'LVSOD\ VSHFLILFDWLRQV			
Display	3 digits, 7 segment LED		
LED Indications	Relay ON		
, QSXW VSHFLILFDWLRQV			
Accuracy	±0.05% of F.S. or 50msec		
Start input	Pulse start		
2XWSXW VSHFLILFDWLRQV			
Contact rating	Relay: NO: 10A 250 VAC/ 24 VDC NO/ NC: 5A/ 5A 250 VAC/ 24VDC		
Relay contact	2X SPDT		
)XQFWLRQDO VSHFLILFDWLRQV			
Auxiliary supply	ON delay/ Interval		
Time ranges	0 - 9.99sec, 0 - 99.9sec, 0 - 999sec, 0 - 99.9min, 0 - 999min, 0 - 99.9hr		
Resolution	0.01sec		
Counting direction	Down		
Set point	1		
Time setting	Pushwheel		
Reset	Front, Remote, On power interruption		
Memory retention	No		
\$X[LOLDU\ VXSSO\ VSHFLILFDWLRQV			
Supply voltage	90 to 270 VAC/ DC (50/ 60Hz) and 24 VDC		
(QYLURQPHQWDO VSHFLILFDWLRQV			
Temperature	Operating: 0 to 50°C ; Storage: - 5 to 55°C		
Humidity (non - condensing)	95% RH		
OHFKDQLFDO VSHFLILFDWLRQV			
Mounting	Panel mount		
Weight	325 gms	325 gms	350 gms

7 H U P L Q D O F R Q Q H F W L R Q V



' L P H Q V L R Q V \$ O O D U H L Q P P 7 L P L Q J G L D J U D P V



2 U G H U L Q J L Q I R U P D W L R Q

3 U R G X F W F R G H	6 X S S O \ Y R O W D J H	& H U W L I L F D W L
; 7	90 to 270 VAC/ DC	---
; 7	90 to 270 VAC/ DC	---